

20230630161049-1   Order Val...

**Confirm Order** Date Quoted: 30 iun. 2023, 19:10:57 Or...

<b>Requirement ID</b>	20230630161049	<b>Original Ad</b>
<b>Lmxdemo Customer Name</b>	10.5_demo	<b>Cleansed Ad</b>
<b>End Customer Name</b>	10.5_demo	<b>Operating Addr</b>
<b>Salesforce Ref.</b>	Autosaved_30/06/23 16:10	<b>Phone</b>
<b>Requester</b>	DevAdmin	<b>OnNet Status</b>
<b>Role</b>	Super Admin User	<b>NearNet Status</b>
<b>COS</b>	N/A	
<b>Comments</b>	N/A	

**Search Info**

**Requirement ID:** 20230630161049

**Quote Info**

<b>Solution ID</b>	20230630161049-1
<b>Supplier Reference</b>	-
<b>Quote Address</b>	20, Lyoner Straße, Frankfurt am Main, 60528
<b>Bandwidth</b>	10 Mbps
<b>Technology</b>	DIA (3rd Party)
<b>Product</b>	Internet
<b>Confirmed Bandwidth</b>	10 Mbps
<b>Interface</b>	Cat-5 RJ45
<b>Carrier</b>	BFiber
<b>Carrier Product</b>	DIA
<b>POP</b>	Not Applicable
<b>Access Technology</b>	-

**Notes**

Guaranteed Bandwidth = 100% ; Contention Ratio

Access Medium to be confirmed on manual re

**ArtSoft**  
— consult —

The Art of Software Development

---

**Cloud-based  
pricing solutions**

## Key Information



### Industry:

Telecommunications



### Project duration:

11 years (Ongoing)



### Team Size:

20 specialists



### Technologies:

- Java, JavaScript, MySQL
- AWS Cloud, ActiveMq, Redis, Spring



### Services:

- Business analysis
- Architecture and software design
- Software development
- Testing services
- DevOps
- Support

## Highlights

- We developed comprehensive software solutions for diverse business needs. The client aimed to deliver top-notch business solutions to telecom partners.
- The ArtSoft team developed a cutting-edge applications for multi-user collaboration, enabling cost savings and efficiency.
- Working closely with stakeholders, providing a skilled software development team proficient in modern methodologies and frameworks, ensuring high-quality output, we delivered optimal solutions for the client.

## Product Overview

The products that we developed consisted of **software solutions** for different telecom areas including business process analysis and process re-engineering; pricing analysis, tariff modeling and cost model development, access for buyers and sellers on the same platform.

Transforming network buying and selling, the platform leverages location intelligence to power automated applications, facilitating faster, better deals for buyers and sellers.

With over 1.4 billion managed locations globally, offer the most accurate view of any location, from geographic structures to competitive environments and tenant profiles.

## Requirements

The company wanted to provide **high-quality business solutions** for their **telecom partners**. Over the years the number of partners increased and thus the requirements to maintain the high quality of the services delivered increased as well. Also, the need to adapt to each customer's own profile and demands requires the project to be flexible and able to **constantly evolve**.

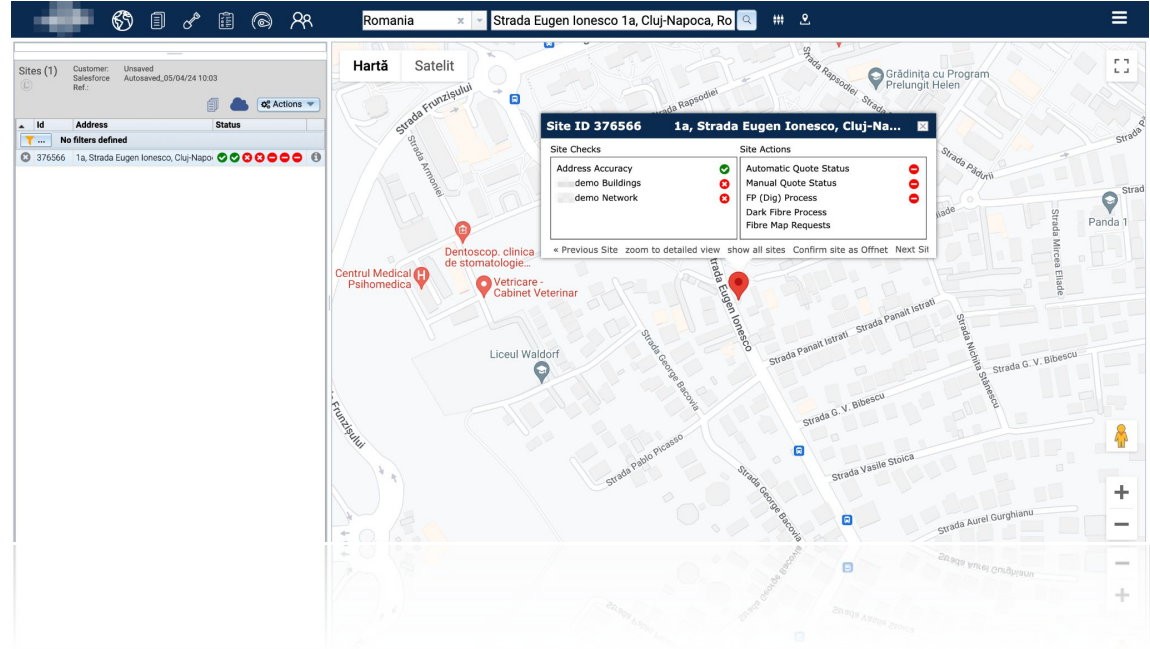
## Challenges

The telecommunications industry presents significant challenges. Managing the influx of specific customer requests amidst a growing user base is among our foremost concerns. With tight delivery timelines, we require a proficient team capable of swiftly analyzing, implementing, testing, and deploying solutions. Effective processes are paramount in managing such large-scale projects, necessitating meticulous organization, comprehensive documentation of features, and meticulous planning.

## Provided Solutions

Our team worked on an advanced application that can handle multiple users concurrently. Users throughout the organization can connect to a common platform to share information. A state-of-the-art application that can connect multiple users to enhance cost-savings, control, and efficiency.

We provided the client with a software development team that is well-versed in modern software development methodologies and frameworks, and a skilled workforce that ensures the most efficient balance between costs and high-quality output. Our team is a flexible team that works in cooperation with the stakeholders to attain the best solutions. Technologies used for this project include Java, JavaScript, MySQL, AWS Cloud, ActiveMq, Redis, and Spring



## “ Client Words

*“We have been very pleased with the level of service that we receive from ArtSoft Consult as well as the quality of the resources provided. ArtSoft Consult has also been able to assist in sourcing some specialist positions that we needed to fill. We have also been able to gain access to specialist resources within ArtSoft Consult who are not part of our core team but have been able to offer support in areas such as creating automated testing scripts, user interface design, and database optimization.”*

- **Co-founder and Commercial Director**

The screenshot displays the 'Site Details' page in the ArtSoft Consult application. The browser address bar shows 'Romania' and 'Strada Eugen Ionesco 1a, Cluj-Napoca, Ro'. The page title is 'Site Details Carrier Quote FP (Dig) Process'. The main content area is divided into several sections:

- Hide Requirement Inputs:** Address: 1a, Strada Eugen Ionesco, Cluj-Napoca, 400366, Județul Cluj, RO. Status: Quote Site Address Validation Complete | Supplier On-Net Building Validation Pending.
- Site Details:** Building Name, Floor/Suite, 1a, Strada Eugen Ionesco, Cluj-Napoca, 400366, Județul Cluj, Site Tot (Landline), No COS.
- Requirement Details:** Network Product: MPLS, Technology: Ethernet, Bandwidth: 10 Mbps, Term: 1.
- Manual Request Details:** No Automated Costs Available, Budgetary, Local Contact's Name, Local Contact's Phone, Local Contact's Email, Select Router.
- Comments & Attachments:** Includes a rich text editor and an 'Add files' button.

Below these sections is a table with the following columns: Req. Actions, Status, Request Type, Lit Buildings, Network Product, Technology, Bandwidth, Term, Requirement ID, Counts, and Feasibility Desk Assignee. The table contains one row with the following data:

Req. Actions	Status	Request Type	Lit Buildings	Network Product	Technology	Bandwidth	Term	Requirement ID	Counts	Feasibility Desk Assignee
	Waiting for Response	Automated	New	MPLS	Ethernet	10 Mbps	1		0 / 0 / 0	

Navigation buttons include 'Get Quote', 'Update Address', 'Previous Site', and 'Next Site'. The bottom of the page shows a 'Previous Site' and 'Next Site' navigation bar.

## Let's get in touch

ArtSoft Consult is a trusted partner in the IT industry, providing tailored solutions to address your unique business challenges.

With our proven expertise our team delivers innovative solutions and development services.

Drawing from years of experience and industry insights, we deeply understand this industry and we look forward to working with your business.

For more details on our services and team, please [contact us](#).



Str. Eugen Ionesco, nr. 1A  
Cluj-Napoca, Romania, 400357

 [www.artsoft-consult.ro](http://www.artsoft-consult.ro)

 [office@artsoft-consult.ro](mailto:office@artsoft-consult.ro)

 +40 0264 403 662

+40 0264 403 489

